

Mounting instructions for swing-doors type PE-15

Assembly:

Check doorway dimensions and compare to the order. Place complete swing-door leaf into to opening and align perpendicularly.

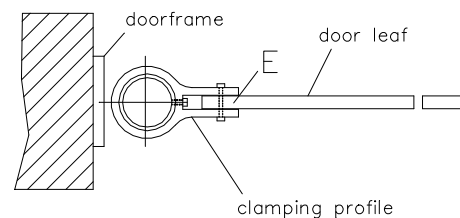
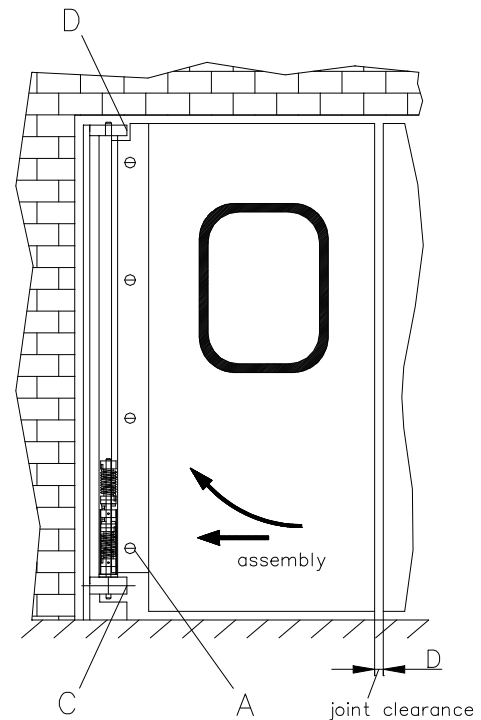
Fixing depends on the doorframe:

- trace pre-drilled holes, drill, put in plugs and screw on.
- weld on.

In case of uneven opening reveals line the fastening points of the doorframe, so that it can be mounted perpendicularly and precisely.

In case of a big and correspondingly heavy leaf we recommend unscrewing the doorframe from the leaf before marking the plug holes.

For this purpose release the screws (C) of the lower clamp bearing. (If the door is equipped with a fixing device, the screws (D) of the upper bearing have to be released as well.) After the doorframe is fixed, the leaf must be reinstalled.



Adjustment:

Adjust the center position by releasing the screws (C), center the leaf and tighten the screws (C) again rigidly, as otherwise the leaf does not swing back into closed position.

By means of the screws (C) the elevation can be adjusted by approx. + 3 mm. In doing so, pay attention to the center position!

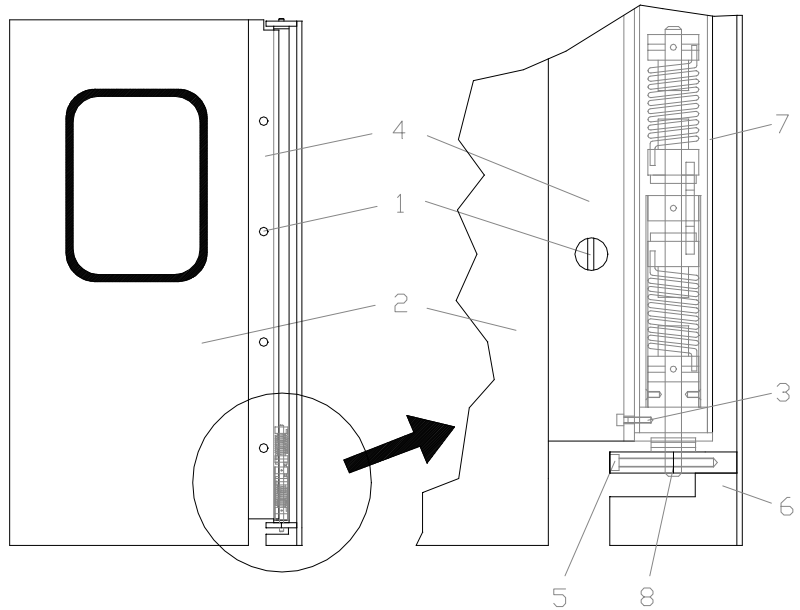
The joint clearance between the leaves (D) can be adjusted by means of the screws (A). For that purpose release screws (A), align door leaf in the holding slit (E), drill new screw holes and then fasten screws (A) again. For simplification purposes we recommend lining the door leaf on the floor.

Mounting instructions for the adjustment of closing pressure of swing-doors type PE-15

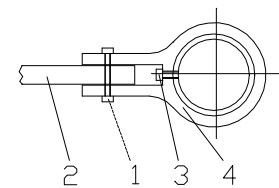
To adjust the swing-door's closing pressure the closing device has to be taken out of the vertical door bar.

For this proceed as follows:

1. Release the screws (1) of the clamping profile (4) and unhinge door leaf (2). Lay down door leaf and underlay **completely** (danger of warpage!).
2. Release screws (5) of the lower bearing (6). If the door is equipped with a fixing device, proceed in the same manner with the upper bearing. Remove clamping profile.
3. Release screw (3) (can be found between the sides of the clamping profile).
4. Pull closing device out of the clamping profile at the lower bearing pin (8).



top view on the door profile



door closure

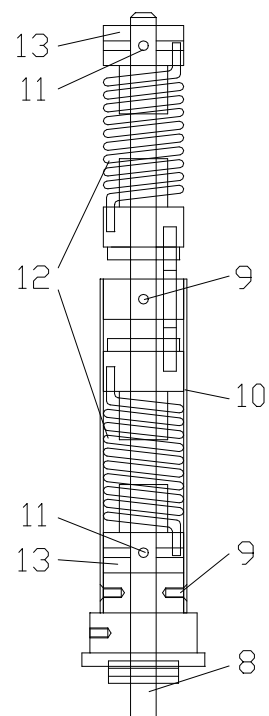
5. Release screws (9) of the closure tube (10) and pull off closure tube upwards from the closure.
6. Clamp bearing pin (8) closely.

Advantageously the following steps should be executed consecutively, but not parallel, i. e. the following points should be settled at first for one spring and then for the other spring.

7. Start bolt (11). (*Beware!!!* In doing so the spring tension is transmitted to the spring receiver (13).).
8. The spring tension may now be taken over by a clamping mandrel - \varnothing 6 mm - (or the like) via the borings in the spring receiver (13).
9. To increase the closing pressure the spring receivers (13) are turned round against the spring tension. To reduce the closing pressure the spring receivers are turned round towards the spring tension. The number of rotations is a matter of discretion.
10. After the bending process drive in bolts (11) again.

By means of a different bending of the springs different restoring forces with regard to the one or other opening direction of the door can be adjusted.

11. To install the closing device proceed according to points 1 – 5 in reverse order. *Attention!* Do not tighten the screws (5) of the lower bearing (6) **rigidly** unless the respective leaf is in closed position (center position).



Mounting instructions for swing-door fixing device types PE-15, PC-5 and PEC-5/15

The optional fixing device is either already integrated into the swing-door's frame profile or can be retrofitted as pre-assembled unit without any problems.

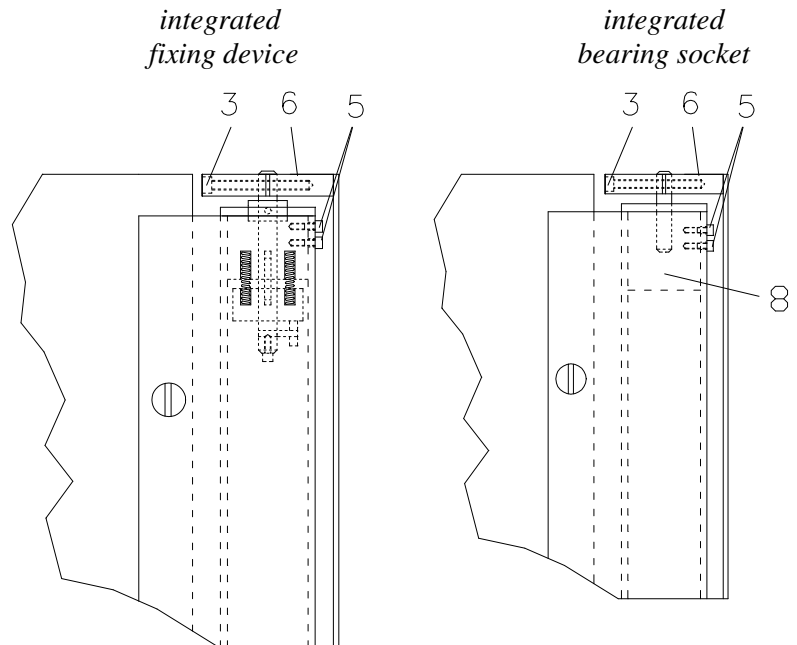
A. Adjustment of an already integrated fixing device

B. Retrofitting of a fixing device

C. Exchange of a fixing device

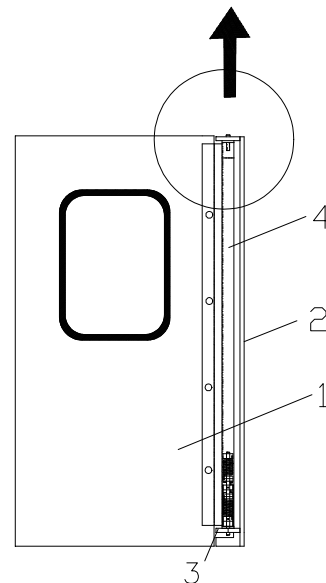
A. Adjustment of a fixing device

1. Place leaf (1) into the doorframe (2), but do **not** yet tighten the screws (3) of the upper door bearing (6) completely.
2. Now turn the leaf into such open position wanted for the 90° fixing.
3. Fasten the upper door bearing (6) **rigidly** in this position by means of the screws (3). Now the fixing device is adjusted and fixes the leaf at 90°.



B. Installation of a fixing device

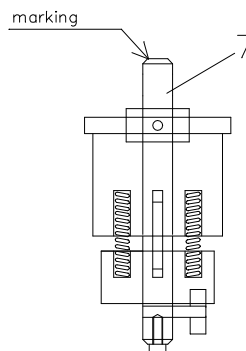
1. Release screws (3) of the upper and lower door bearing and unhinge the leaf (1) from the doorframe (2). **Lay down leaf and underlay completely (danger of warpage!).**
2. Dismount doorframe (2) and exchange upper door bearing (6) against divided door bearing. Re-assemble doorframe.
3. Unscrew bolts (5) and pull bearing socket (8) upwards out of the frame profile (4).
4. Put in fixing device and turn that way in the frame profile (4) that the marking on component no. (7) is in alignment with the leaf. Then drill a hole for bolts (5) (Ø 5 mm, approx. 25 mm deep) and fasten bolts again.
5. Continue under point A.



C. Exchange of a fixing device

1. Please refer to point B. 1.
2. Unscrew bolts (5) and pull fixing device upwards out of the frame profile (4).
3. Please refer to point B. 4.
4. Please refer to point A.

fixing device



top view
on the door profile

